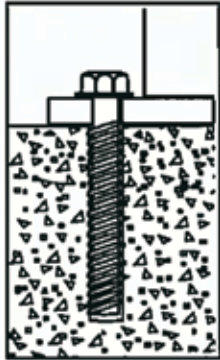


ANCHOR OPTIONS

These are the recommended anchor options for complying with the National Building Code. We also offer transition anchors for certain options.

- > **Anchored into concrete to building code**

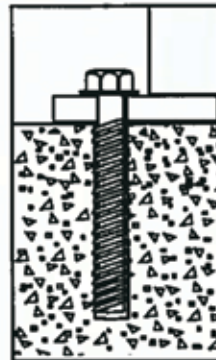


Diameter: 3/8"
Length: 4"
Head size: 9/16" hex
Depth of hole: 5"
Min. position of base: 2"

A

4 concrete anchors 4" per post

- > **Same, not to code (light version for railings on decks low to ground)**

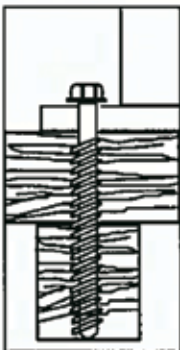


Diameter: 3/8"
Length: 2-1/2"
Head size: 9/16" hex
Depth of hole: 3-1/2"
Min. position of base: 2"

B

4 concrete anchors 2-1/2" per post

- > **Anchored to wood deck**

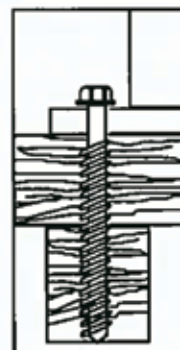


Diameter: 1/4"
Length: 4"
Head size: 3/8"
Min. position of base: 1-1/4"

C

4 anchors 4" long

- > **Anchored to fibreglass deck**

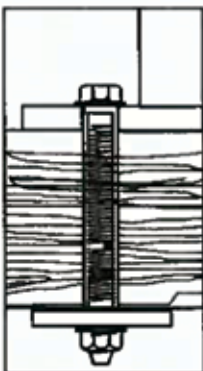


Diameter: 1/4"
Length: 4"
Head size: 3/8"
Min. position of base: 1-1/4"

D

4 anchors 4" long

- > **Bolted through (wood floor)**



Diameter: 3/8"
Length: 2-3/4"
Head size: 9/16" hex
Min. position of base: 1-1/4"

E

4 anchors 2-3/4" long per post

Fence-All

"For all your fencing needs"

We offer hybrid bolting and anchoring to wood, fibreglass, and metal. Refer to options C through E for technical information on recommended anchors.